



# Arts

## Schedule

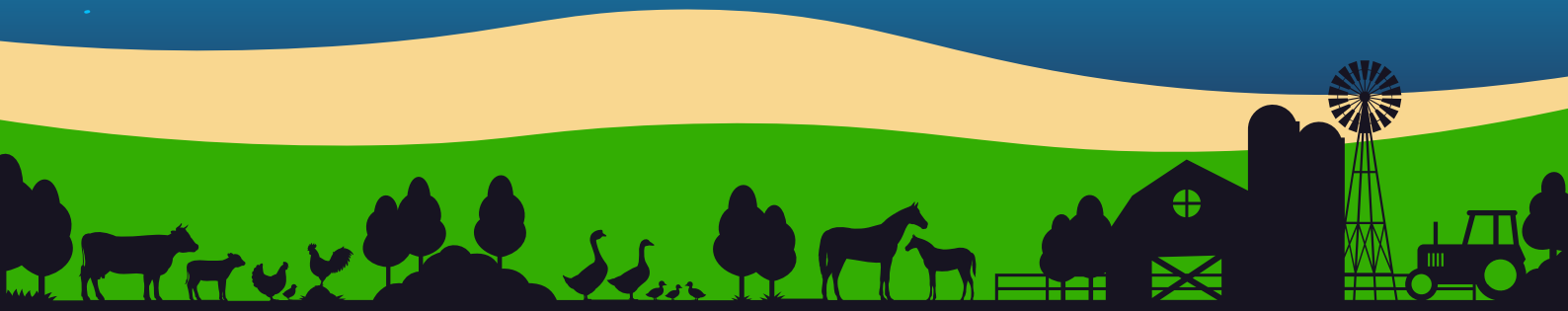
27 - 29 August 2021



*Gold Coast  
Show*



*Bringing the Sun, Sea  
and Country together*



# WELCOME TO THE 2021 GOLD COAST SHOW VISUAL & YOUTH ARTS SCHEDULE

---

## GENERAL REGULATIONS & ACCEPTANCE OF ENTRIES

Judging will be performed by a panel of judges appointed by the Gold Coast Show Society.

## NOTICE TO INTENDING EXHIBITORS

Entry Forms are available from our website [www.goldcoastshow.com.au](http://www.goldcoastshow.com.au) Entries submitted other than on the correct form will be returned to the Exhibitor and, unless all requirements are completed and the forms returned to the Office by 5.00pm on the closing date, Friday 6th August 2021, they will not be considered. Applicants can pay for their entries online via direct debit, at the Show Office, by filling in their credit card details on the Entry Form, or they can download an Entry Form and post with payment to:

Competitions, Gold Coast Show Society Inc., PO Box 5426, GCMC QLD 9726

## PRIVACY STATEMENT

You can be assured that the privacy of your personal information is of the utmost importance to us. The information you provide in any membership or entry applications is used by the Gold Coast Show Society to offer member services, or organise and conduct competitions at the Gold Coast Show. By applying for membership or entering such competitions you consent to provide such details as your name, address and exhibit details. Competition information may be made available to the media and included in GCS Publications.

## WORKPLACE HEALTH & SAFETY

The Gold Coast Showgrounds is designated a Workplace within the meaning of the Workplace Health and Safety Act 2012.

2021 exhibitors/competitors are required to ensure that they and all persons under their direction or control, including their contractors and sub-contractors, comply with all requirements of the Act. The GCS holds each exhibitor responsible to discharge its obligations to provide and maintain a safe place and system of work during occupation by the exhibitor/competitor of any area of the GC Showgrounds.

Each exhibitor/competitor will assess the risk to themselves, staff, volunteers, family, other exhibitors, GCS staff, show visitors, children and any person foreseeable affected by the presentation of the exhibit.

Risks identified by exhibitors/competitors will be eliminated or controlled by the exhibitor/competitor and particular attention will be paid to ensuring public safety of other exhibitors/competitors.

## ENTRIES CLOSE

Friday, 6th August 2021 at 5.00pm.

## DELIVERY OF EXHIBITS

All arts.

Monday 23rd August, 1.00pm – 6.00pm

Delivery address: Broadwater Parklands, Gold Coast Highway Southport

***Each exhibit must have attached a label downloaded from the website or collected from the Show office.***

***Art & Photography Exhibits must have 2 labels attached to their work, (one (1) to the back and one (1) to the front.***

## COLLECTION/PICK UP OF EXHIBITS

Monday 30th August, 8.00am – 12 noon

## GENERAL CONDITIONS OF ENTRY

- A maximum of one (1) entry per exhibitor per class unless otherwise stated.
- All entries must have been created by the Exhibitor unaided, must not breach copyright, be completed within the past 2 years and not previously won a prize at the Gold Coast Show.
- All exhibits must be a bona fide work of the Exhibitor, grown or made by the individual, unless otherwise stated. Entries added into the Gold Coast Show Arts competition from previous years may not be re-entered.
- In Painting and drawing sections, once the artist has submitted their entry there can be no changes to the title or sale price. If for any reason the original piece cannot be entered it may be substituted with another piece of work having the same title and sale price as already submitted.
- Completed entry forms must be received by 5.00pm Friday 6th August 2021
- An Entry Fee is to be paid for each work entered and must be paid at time of application otherwise your application will not be accepted. Please call the Show office on 07 5504 5587 if you have any problems.
- See individual classes for appropriate entry fees and class requirements.
- NO LATE entries will be accepted.
- The Show Society reserves the right to declare "NO COMPETITION" in any class in which there are fewer than three entries.

- The Judges have the right to award a second prize, if they feel the exhibit is not up to show standard for first place.
- The Show Society will exercise all reasonable care with entries but will NOT be responsible for loss and/or damage. Exhibits are displayed at Owner's risk.
- Exhibitors are responsible for maintaining their own Insurance cover if required.
- The Stewards will hang and display all exhibits.
- 25% Commission will be retained by the Gold Coast Show Society Inc. on all works sold during the Show.
- The Exhibitor consents to the Gold Coast Show Society publishing or reproducing in any manner whatsoever any particulars or information in relation to their exhibits; the publication or reproduction may be in a printed form or visual image through electronic means and/or on the internet.
- The Judge's decision will be final and no correspondence will be entered into. A Judge may withhold an Award if the standard of entries is not sufficiently high.
- The Society reserves the right to reject or withdraw any exhibit which is deemed inappropriate and no correspondence will be entered into.
- Works not picked up within 10 days of the designated pickup time will be disposed of at the discretion of the Gold Coast Show Inc.
- Under no circumstances will any late deliveries be accepted.

### **TROPHIES**

**The JOCK MCILWAIN Perpetual Trophy** Award will be awarded for the best Painting.

**The KEITH BATTEN Perpetual Trophy** will be awarded for overall Best Photography.

All Trophies will remain in the Gold Coast Show office displayed and a keeper will be awarded to the winner.

### **POINTERS FOR SHOW**

#### **ART ENTRIES**

All entries must have been completed in the last 2 years and must not have been entered in the Class before.

**All Art - Can be for sale or not for sale**, this must be displayed on their entry form and sticker. **A REMINDER THAT ONCE YOUR ENTRIES ARE SUBMITTED THEY CANNOT BE CHANGED IN ANYWAY.**

**If for any reason the original piece cannot be entered it may be substituted with another piece of work having the same title and sale price as already submitted.**

#### **PAINTING & DRAWING**

##### **Mounting**

Artwork in all classes shall be suitably mounted and framed with the exception of some types of paintings; a stretched canvass is considered framed. All artwork must be ready for hanging with wire or cord suitably attached; definitely no small hooks will be accepted or works will not be hung.

##### **Size Limitation**

The size of any painting including the frame **must not exceed 105cm x 105cm** measured from the outside edge of frame. This regulation will be strictly enforced and any painting or drawing exceeding the above measurements will not be accepted. **PLEASE NOTE: THE FOREGOING WILL BE STRICTLY ENFORCED.**

#### **PHOTOGRAPHY**

##### **Mounting**

Prints must be securely mounted on 3mm or 5mm foam core only. Prints must be firmly mounted on rigid foam core, no less than 3mm thick and be floated or mounted behind mat board of any colour. **NO THIN CARDBOARD WILL BE ACCEPTED.**

##### **Size**

All prints are to be unframed and with mount be no larger than 40cm x 50cm. Panoramas will be accepted provided that the measurements do not exceed the above dimensions. Prints outside these dimensions will not be exhibited.

##### **Display**

Wall display will be by way of 'Velcro' or plastic channel mounting.

#### **All enquiries can be directed to**

Gold Coast Show Society Ph.: 07 5504 5587

E: [admin@goldcoastshow.com.au](mailto:admin@goldcoastshow.com.au)

Postal address: PO Box 5426 GCMC QLD 9726

# ARTS | LIMIT 1 ENTRY PER CLASS

---

## PAINTING & DRAWING

### Open Painting Award

The JOCK MCILWAIN Perpetual Trophy for Best Painting classes 360 – 366. Winner will receive a keeper trophy and rosette.

**CLASS 360 Art Ability**

(Working with people with disabilities)

Individual Art Ability) Any Subject

Painting or Drawing - Any medium

Entry Fee: \$5.00

Prize: 1st - \$100 2nd - \$50

**CLASS 361 Painting Oil /Acrylic**

Any subject

Entry Fee: \$10.00

Prize: 1st - \$200, 2nd - \$100

**CLASS 362 Painting – Traditional Watercolour**

Any subject.

Entry Fee: \$10.00

Prize: 1st - \$200, 2nd - \$100

**CLASS 363 Painting Mixed Media, Collage, Gouache**

Any Subject Traditional/Abstract

Entry Fee: \$10.00

Prize 1st - \$200, 2nd \$100

**CLASS 364 Painting – Portrait**

Any medium. Painting must be of a Human Face, “a likeness of an individual, especially of the face.”

Entry Fee: \$10.00

Prize: 1st - \$200, 2nd - \$100

**CLASS 365 Indigenous Australian Art**

Any subject. Any medium or Mixed Media. Restricted to Indigenous Australian entrants.

Entry Fee: \$10.00

Prize: 1st - \$200, 2nd - \$100

**CLASS 366 Drawing**

Any subject. Any medium

Entry Fee: \$10.00

Prize: 1st - \$200, 2nd - \$100

**CLASS 367 Miniature Art**

Any Subject. Any Medium

Must be framed. Size of the worked surface not to exceed 1000sq mm.

The Frame must be proportionate to work and be no larger than 10cm on any one side.

Entry Fee: \$5.00

Prize: 1st - \$100, 2nd - \$50

**CLASS 368 Art in Bark (2 entries per person)**

Any Subject

Entry Fee: \$5.00

Prize: 1st - \$100, 2nd - \$50

# GLASS CRAFT

---

Exhibits **MUST NOT EXCEED 35CM** in any direction. All entries must have been completed in the last 2 years.

**CLASS 370      Glass**

Can be Kiln fired glass, Cold Glass, or Blown Glass.

Entry Fee: \$5.00

Prize: 1<sup>st</sup> - \$120, 2<sup>nd</sup> - \$60

# CERAMICS

---

All entries must have been completed in the last 2 years and must not have been entered in the Ceramics before.

**CLASS 371      Glazed or Acrylic works on Ceramic Original Designs**

Entry Fee: \$5.00

Prize: 1<sup>st</sup> - \$100 Picasso Ceramics Voucher

# POTTERY

---

All entries must have been completed in the last 2 years and must not have been entered in the Pottery before.

**CLASS 372      Pottery**

Wheel Thrown or Hand Built

Entry Fee: \$5.00

Prize: 1<sup>st</sup> - \$100 2<sup>nd</sup> - \$40

# SCULPTURE

---

All entries must have been completed in the last 2 years and must not have been entered in the Sculpture before. Must be an indoor sculpture.

**CLASS 373      Sculpture (Open)**

Cast, carved, or modelled.

8000mm

Entry Fee: \$10.00

Prize: 1st - \$200 2nd - \$100

# PHOTOGRAPHY

---

**All Photography - Can be for sale or not for sale**, this must be displayed on their entry form and sticker. A REMINDER THAT ONCE YOUR ENTRIES ARE SUBMITTED THEY CANNOT BE CHANGED IN ANYWAY.

## Mounting

Prints must be securely mounted on 3mm or 5mm foam core only. Prints must be firmly mounted on rigid foam core, no less than 3mm thick and be floated or mounted behind mat board of any colour. **NO THIN CARDBOARD WILL BE ACCEPTED.**

## Size

All prints are to be unframed and with mount be no larger than 40cm x 50cm. Panoramas will be accepted provided that the measurements do not exceed the above dimensions. Prints outside these dimensions will not be exhibited.

## Display

Wall display will be by way of 'Velcro' or plastic channel mounting.

## Open Photography Award

The KEITH BATTEN Perpetual Trophy awarded to Best photograph from Classes 390 – 392. Winner will receive a keeper trophy and rosette.

All prints to be taken by the entrant in the last 2 years and must not have been entered in the show before.

### **CLASS 390      Photographic Print Colour**

Entry Fee: \$5.00

Prize: 1st - \$100, 2nd - \$50

### **CLASS 391      Photographic Print Monochrome**

Entry Fee: \$5.00

Prize: 1st - \$100, 2nd - \$50

### **CLASS 392      Creative Print**

Original work by entrant

Entry Fee: \$5.00

Prize: 1st - \$100, 2nd - \$50

# YOUTH ARTS | LIMIT 1 ENTRY PER CLASS

---

## GENERAL CONDITIONS OF ENTRY

Judging will be performed by a panel of judges appointed by the Gold Coast Show Society.

## NOTICE TO INTENDING EXHIBITORS

Entry Forms are available from our website [www.goldcoastshow.com.au](http://www.goldcoastshow.com.au). Entries submitted other than on the correct form will be returned to the Exhibitor and, unless all requirements are completed and the forms returned to the Office by 5.00pm on the closing date, Friday 13th August 2021, they will not be considered. Applicants can pay for their entries via direct deposit, at the Show Office, or they can download an Entry Form and post with payment to

Competitions, Gold Coast Show Society, PO Box 5426, GCMC QLD 9726

## PRIVACY STATEMENT

You can be assured that the privacy of your personal information is of the utmost importance to us. The information you provide in any membership or entry applications is used by the Gold Coast Show Society to offer member services, or organise and conduct competitions at the Gold Coast Show. By applying for membership or entering such competitions you consent to provide such details as your name, address and exhibit details. Competition information may be made available to the media and included in GCS Publications.

## WORKPLACE HEALTH & SAFETY

The Gold Coast Showgrounds is designated a Workplace within the meaning of the Workplace Health and Safety Act 2012. 2021 exhibitors/competitors are required to ensure that they and all persons under their direction or control, including their contractors and sub-contractors, comply with all requirements of the Act. The GCS holds each exhibitor responsible to discharge its obligations to provide and maintain a safe place and system of work during occupation by the exhibitor/competitor of any area of the GC Showgrounds.

Each exhibitor/ competitor will assess the risk to themselves, staff, volunteers, family, other exhibitors, GCS staff, show visitors, children and any person foreseeable affected by the presentation of the exhibit.

Risks identified by exhibitors/competitors will be eliminated or controlled by the exhibitor/competitor and particular attention will be paid to ensuring public safety of other exhibitors/competitors.

## ART ENTRIES

- All entries must have been completed in the last 2 years and must not have been entered in the Class before.
- All Art and Photography - Can be for sale or not for sale, this must be displayed on their entry form and sticker.

**A REMINDER THAT ONCE YOUR ENTRIES ARE SUBMITTED THEY CANNOT BE CHANGED IN ANYWAY.**

If for any reason the original piece cannot be entered it may be substituted with another piece of work having the same title and sale price as already submitted.

Each exhibit must have attached a label downloaded from the website or collected from the Show office. Art & Photography Exhibits must have 2 labels attached to their work, (one (1) to the back and one (1) to the front.

***Entry forms must be submitted by 5pm Friday 6th August 2021***

**\*\*Age - must be the age at the time of Show\*\***

Delivery of Entries:

All ARTS & PHOTOGRAPHY

Monday 23RD August, 1.00pm-6.00pm

Delivery address: Broadwater Parklands (turn into parking near Aquatic Centre), Gold Coast Highway, Southport

Collection of Entries:

Monday 30th August, 8.00am-12 noon

***No late entries will be accepted***

## SCHOOL POINTS AWARD:

Entries will be judged individually. Points will be calculated on the following basis:

- o First Prize – 3points
- o Second Prize – 2 points
- o Entry – 1points

A **Champion Trophy** will be awarded to the school whose students gain the highest aggregate points.

**The Lionel Perry Encouragement Award Trophy** will be awarded to the school with the highest points accumulated via entry points.

**\*\*Make sure to include the name of your school on the entry form and on your label so they get the points you contribute.**

Entries will be available for collection, on collection day ONLY. No artworks can be removed from the exhibit by the entrant (or purchaser of artwork) during the show.

The Stewards of the Show Society will exercise all reasonable care with artworks submitted, but will not be responsible for the loss of, or any damage whatsoever to the entry whilst in their custody.

Entries will become the property of the Show Society if not claimed on the collection date or the Show Society notified in writing before completion of the Show that the artworks will be collected within 10 days of the collection date.

The Show Society reserves the right to display or reject any or all of the entries. Entries which are displayed must remain on exhibition for the full period of the Show. Those artworks not displayed will not be available for collection until the collection date. Artworks are displayed at the discretion of the judges

All entries must have been created by the Exhibitor unaided, must not breach copyright, be completed within the past 2 years and not previously entered in the Gold Coast Show.

Exhibits must be clean and show no wear and tear.

## PAINTING & DRAWING

***A MESSAGE FOR ALL YOUTH ART TEACHERS: WHERE POSSIBLE WHEN SUBMITTING ENTRIES FOR STUDENTS IN THE YOUTH ART CLASSES PLEASE ENSURE THERE IS A VARIETY OF SUBJECT MATTER WITHOUT BEING REPETATIVE.***

### **Mounting**

Artwork in all classes shall be suitably mounted and framed with the exception of some types of paintings; a stretched canvass is considered framed. All artwork must be ready for hanging with wire or cord suitably attached; definitely no small hooks will be accepted or works will not be hung.

### **Size Limitation**

The size of any painting including the frame must not exceed 105cm x 105cm measured from the outside edge of frame. This regulation will be strictly enforced and any painting or drawing exceeding the above measurements will not be accepted.

**PLEASE NOTE: THE FOREGOING WILL BE STRICTLY ENFORCED.**

## PHOTOGRAPHY

### **Mounting**

Prints must be securely mounted on 3mm or 5mm foam core only. Prints must be firmly mounted on rigid foam core, no less than 3mm thick and be floated or mounted behind mat board of any colour. **NO THIN CARDBOARD WILL BE ACCEPTED.**

### **Size**

All prints are to be unframed and with mount be no larger than 40cm x 50cm. Panoramas will be accepted provided that the measurements do not exceed the above dimensions. Prints outside these dimensions will not be exhibited.

### **Display**

Wall display will be by way of 'Velcro' or plastic channel mounting.



# YOUTH ARTS | LIMIT 1 ENTRY PER CLASS

---

## PAINTING

Excluding violence and X-rated

**CLASS 500 Under 8 Years of Age**

Any subject. Any media of paint: oil, acrylic, or watercolour.

Entry Fee: \$2.00

Prize: 1<sup>st</sup>- \$10, 2<sup>nd</sup>- \$5

**CLASS 501 Age 8 – 13**

Any subject. Any media of paint: oil, acrylic, or watercolour.

Entry Fee: \$2.00

Prize: 1<sup>st</sup>- \$15, 2<sup>nd</sup>- \$5

**CLASS 502 Age 14 – 18**

Any subject. Any media of paint: oil, acrylic, or watercolour.

Entry Fee: \$2.00

Prize: 1<sup>st</sup>- \$20, 2<sup>nd</sup>- \$10

## DRAWING

Excluding violence and X-rated

**CLASS 505 Under 8 Years of Age**

Any subject

Entry Fee: \$2.00

Prize: 1<sup>st</sup>- \$10, 2<sup>nd</sup>- \$5

**CLASS 506 Age 8 - 13**

Any subject

Entry Fee: \$2.00

Prize: 1<sup>st</sup>- \$15, 2<sup>nd</sup>- \$5

**CLASS 507 Age 14 - 18**

Any subject

Entry Fee: \$2.00

Prize: 1<sup>st</sup>- \$20, 2<sup>nd</sup>- \$10

## PHOTOGRAPHY

Can be colour or monochrome

**CLASS 510 Age 8 – 13**

Photography Theme: Birds

Entry Fee: \$2.00

Prize: 1<sup>st</sup>- \$10, 2<sup>nd</sup>- \$5

**CLASS 511 Age 14 – 18**

Photography Theme: Birds

Entry Fee: \$2.00

Prize: 1<sup>st</sup>- \$20, 2<sup>nd</sup>- \$10

**CLASS 512 Age 8 – 13**

Photography Theme: Seascape

Entry Fee: \$2.00

Prize: 1<sup>st</sup>- \$10, 2<sup>nd</sup>- \$5

**CLASS 513     Age 14 – 18**  
Photography Theme: Seascape  
Entry Fee: \$2.00  
Prize: 1<sup>st</sup>- \$20, 2<sup>nd</sup>- \$10

**CLASS 514     Age 8 – 13**  
Photography Theme: Selfie  
Entry Fee: \$2.00  
Prize: 1<sup>st</sup>- \$10, 2<sup>nd</sup>- \$5

**CLASS 515     Age 14 - 18**  
Photography Theme: Selfie  
Entry Fee: \$2.00  
Prize: 1<sup>st</sup>- \$20, 2<sup>nd</sup>- \$10

**CLASS 516     Age 8 - 13 Photography Theme:**  
Digital Creative  
Any topic (excluding violence and X-rated). Manipulation and creativity highly encouraged.  
Entry Fee: \$2.00  
Prize: 1<sup>st</sup>- \$10, 2<sup>nd</sup>- \$5

**CLASS 517     Age 14 - 18 Photography Theme:**  
Digital Creative  
Any topic (excluding violence and X-rated). Manipulation and creativity highly encouraged.  
Entry Fee: \$2.00  
Prize: 1<sup>st</sup>- \$20, 2<sup>nd</sup>- \$10

#### **SHORT FILMS**

Open subject. No violence or X-rated. Delivery – USB. Maximum of 4 minutes. 1920 x 1080. 25 frames progressive. 16 x 9 aspect ratio. Mp4 with H.264 compression. 48 kHz 24 bit audio. Clearly labelled with 'Film Name and Director Name'.mp4

**CLASS 520     Short Film (Open)**  
Entry Fee: \$2.00  
Prize: 1<sup>st</sup>- \$50

#### **POTTERY**

**CLASS 521     Age 8 – 13**  
Entry Fee: \$2.00  
Prize: 1<sup>st</sup>- \$10, 2<sup>nd</sup>- \$5

**CLASS 522     Age 14 – 18**  
Entry Fee: \$2.00  
Prize: 1<sup>st</sup>- \$20, 2<sup>nd</sup>- \$10

#### **GRAPHIC DESIGN ART**

All artworks must be created 100% on the computer or be a digital manipulation of an original graphic of entrant. Photoshop, various Adobe programs, various digital creative programs.

**CLASS 523     Age 8 – 13**  
Entry Fee: \$2.00  
Prize: 1<sup>st</sup>- \$10, 2<sup>nd</sup>- \$5

**CLASS 524     Age 14 – 18**  
Entry Fee: \$2.00  
Prize: 1<sup>st</sup>- \$20, 2<sup>nd</sup>- \$10

#### **MIXED MEDIA ART**

Any subject (excluding violence and X-rated).  
Mixed paint, collage, gouache, etc.

**CLASS 525 Under 8 Years of Age**

Entry Fee: \$2.00

Prize: 1<sup>st</sup>- \$10, 2<sup>nd</sup>- \$5

**CLASS 526 Age 8 – 13**

Entry Fee: \$2.00

Prize: 1<sup>st</sup>- \$15, 2<sup>nd</sup>- \$5

**CLASS 527 Age 14 – 18**

Entry Fee: \$2.00

Prize: 1<sup>st</sup>- \$20, 2<sup>nd</sup>- \$10

**SCULPTURE**

Any medium including: clay, metal, recycled, resin, pottery, and hand thrown. Artwork must be stable for display and be able to be moved by one or two people.

**CLASS 528 Age 8 – 18**

Sculpture and 3D form. Not to exceed 35cm in any direction.

Entry Fee: \$2.00

Prize: 1<sup>st</sup>- \$20, 2<sup>nd</sup>- \$10

**TECHNOLOGY AND DESIGN**

Create a structure or object using glass, metal, fibre, or plastic. 3D printing welcome.

**CLASS 529 Age 8 – 18**

Cannot exceed 35cm in any direction.

Entry Fee: \$2.00

Prize: 1<sup>st</sup>- \$20, 2<sup>nd</sup>- \$10

---

# PRIMARY SCHOOL SCARECROW COMPETITION

---

**CLASS 560 Age 8 –12**

***The Brief***



**Theme:** The Gold Coast Show Scarecrow

**Construction:**

- The display can be made from any kind of material or medium (except food).
- It must be free standing and be able to survive outside in the weather.
- Thought should be taken to ensure durability for the three-day event.
- The completed display, along with stability stand (if required) and any additional artistic composition, must exceed an area of 1.2m wide x 1.2m high – if you would like to make an exception to this please contact the Show Office.
- There are no minimum or maximum height requirements.
- There is also no limit to your imagination and you can be as fun and creative as you want.
- Please include first names of Students involved in Project when delivered.

Delivery Date is - **MONDAY, AUGUST 23rd, 2021 between 1.00pm – 6.00pm**

If unable to deliver entries on these days, prior arrangements may be made by phoning the Show Office.

**SHOWGROUNDS LOCATION: BROADWATER PARKLANDS, GOLD COAST HIGHWAY, SOUTHPORT**

**GOLD COAST SHOW OFFICE: GOLD COAST TURF CLUB, RACECOURSE DRIVE, BUNDALL**

**EMAIL: [admin@goldcoastshow.com.au](mailto:admin@goldcoastshow.com.au)**

**TELEPHONE SHOW OFFICE: 07 5504 5587**

---

*thanks to all our valuable sponsors and supporters of the Visual & Youth Arts*



Proudly supporting

**Cancer  
Council  
Queensland**